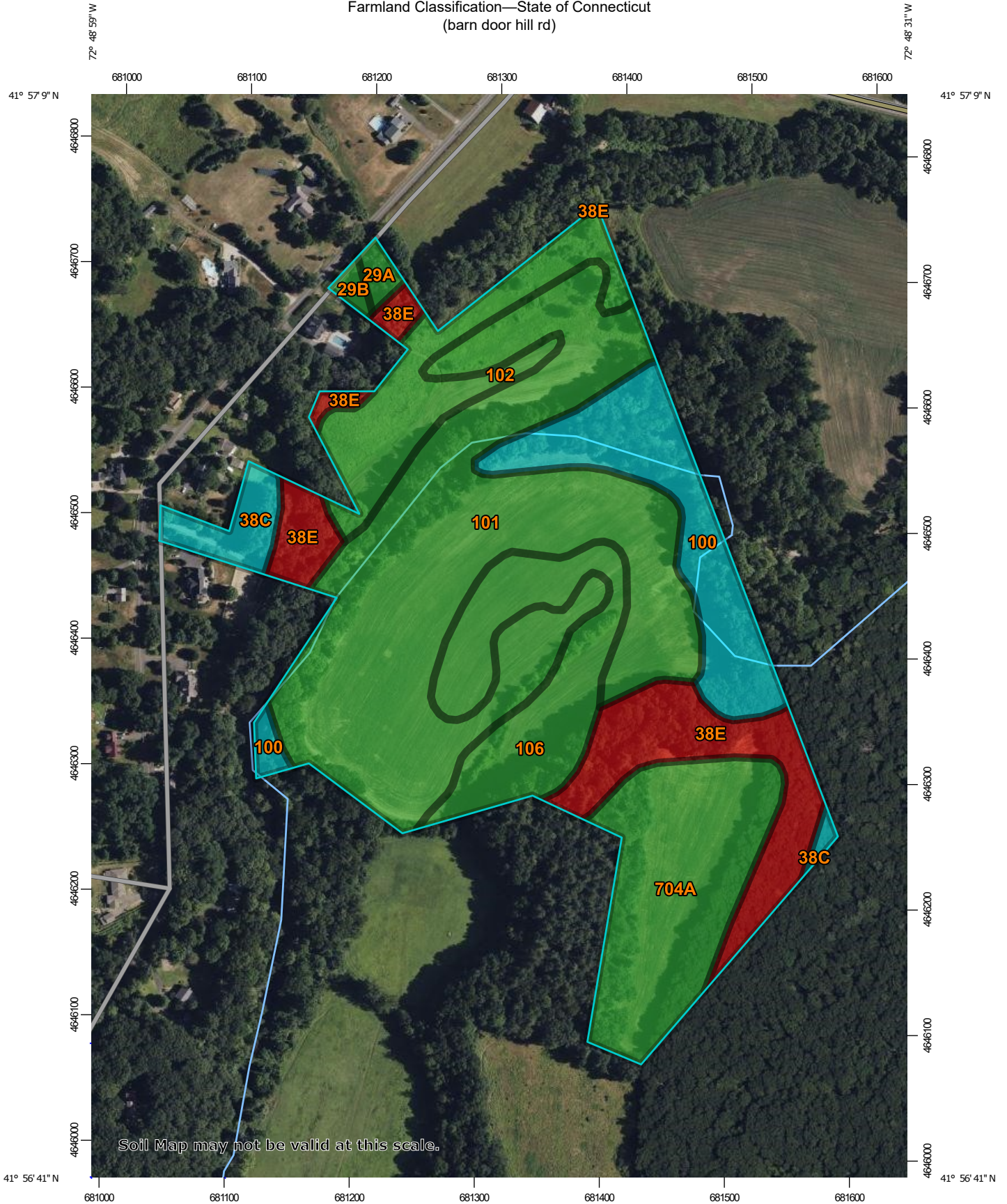
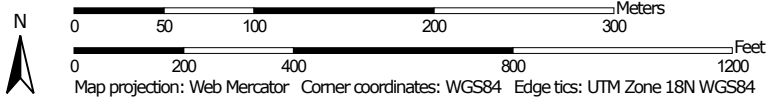


Farmland Classification—State of Connecticut
(barn door hill rd)



Soil Map may not be valid at this scale.

Map Scale: 1:4,200 if printed on A portrait (8.5" x 11") sheet.



Farmland Classification

Map unit symbol	Map unit name	Rating	Acres in AOI	Percent of AOI
29A	Agawam fine sandy loam, 0 to 3 percent slopes	All areas are prime farmland	0.3	0.7%
29B	Agawam fine sandy loam, 3 to 8 percent slopes	All areas are prime farmland	0.2	0.5%
38C	Hinckley loamy sand, 3 to 15 percent slopes	Farmland of statewide importance	1.2	2.8%
38E	Hinckley loamy sand, 15 to 45 percent slopes	Not prime farmland	5.0	11.8%
100	Suncook loamy fine sand	Farmland of statewide importance	4.6	10.9%
101	Occum fine sandy loam	All areas are prime farmland	16.5	39.3%
102	Pootatuck fine sandy loam	All areas are prime farmland	3.7	8.8%
106	Winooski silt loam	All areas are prime farmland	4.7	11.1%
704A	Enfield silt loam, 0 to 3 percent slopes	All areas are prime farmland	6.0	14.2%
Totals for Area of Interest			42.0	100.0%

Description

Farmland classification identifies map units as prime farmland, farmland of statewide importance, farmland of local importance, or unique farmland. It identifies the location and extent of the soils that are best suited to food, feed, fiber, forage, and oilseed crops. NRCS policy and procedures on prime and unique farmlands are published in the "Federal Register," Vol. 43, No. 21, January 31, 1978.

Rating Options

Aggregation Method: No Aggregation Necessary

Tie-break Rule: Lower