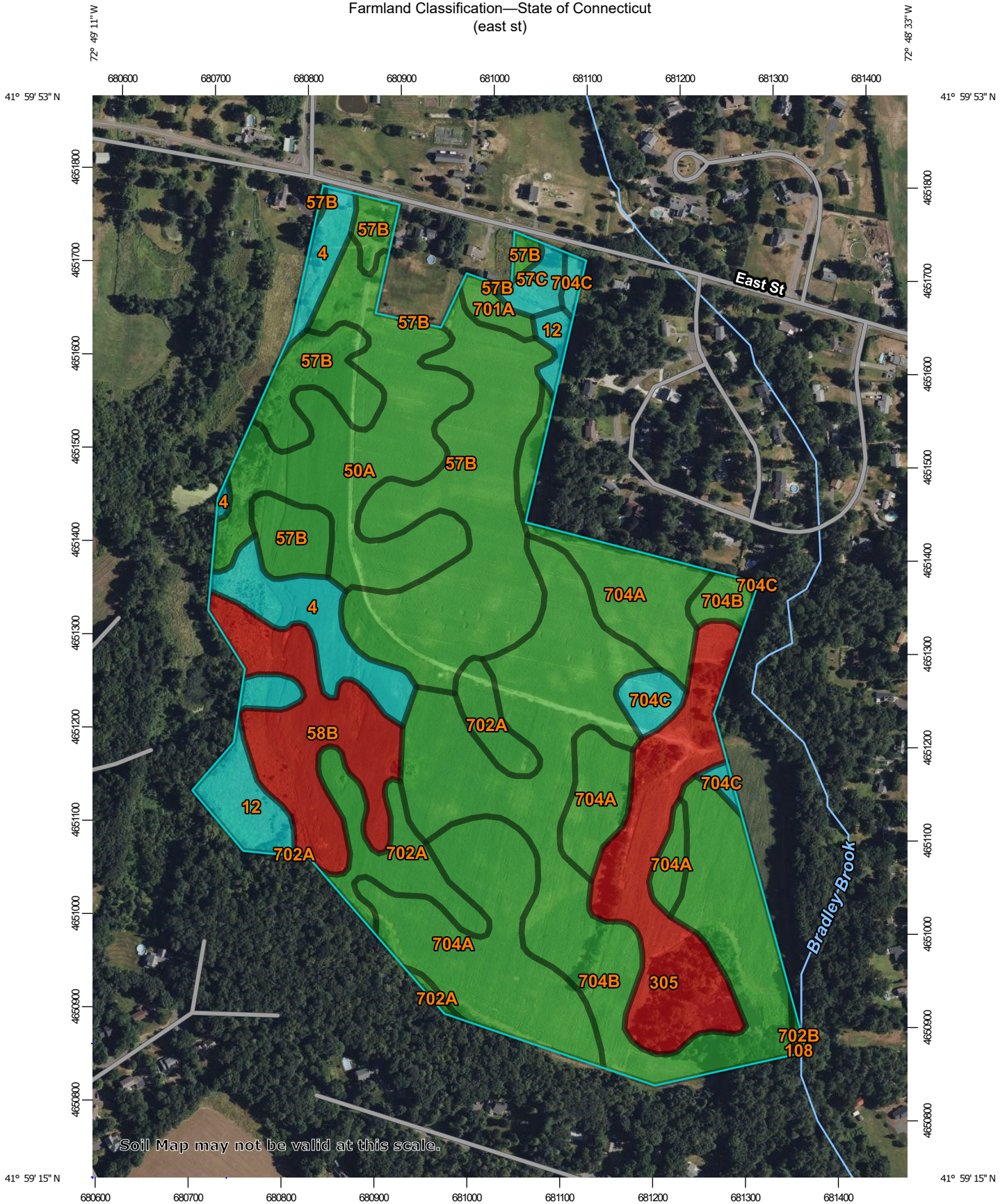
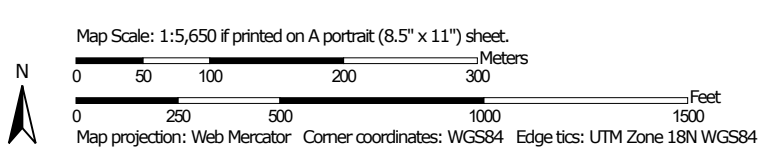


Farmland Classification—State of Connecticut
(east st)



Soil Map may not be valid at this scale.



Farmland Classification

Map unit symbol	Map unit name	Rating	Acres in AOI	Percent of AOI
4	Leicester fine sandy loam	Farmland of statewide importance	4.5	4.9%
12	Raypol silt loam	Farmland of statewide importance	2.9	3.2%
50A	Sutton fine sandy loam, 0 to 3 percent slopes	All areas are prime farmland	10.7	11.6%
57B	Gloucester gravelly sandy loam, 3 to 8 percent slopes	All areas are prime farmland	16.8	18.2%
57C	Gloucester gravelly sandy loam, 8 to 15 percent slopes	Farmland of statewide importance	0.8	0.9%
58B	Gloucester gravelly sandy loam, 3 to 8 percent slopes, very stony	Not prime farmland	6.7	7.3%
108	Saco silt loam	Not prime farmland	0.0	0.0%
305	Udorthents-Pits complex, gravelly	Not prime farmland	7.8	8.5%
701A	Ninigret fine sandy loam, 0 to 3 percent slopes	All areas are prime farmland	0.7	0.7%
702A	Tisbury silt loam, 0 to 3 percent slopes	All areas are prime farmland	4.4	4.8%
702B	Tisbury silt loam, 3 to 8 percent slopes	All areas are prime farmland	0.1	0.1%
704A	Enfield silt loam, 0 to 3 percent slopes	All areas are prime farmland	14.6	15.8%
704B	Enfield silt loam, 3 to 8 percent slopes	All areas are prime farmland	20.6	22.4%
704C	Enfield silt loam, 8 to 15 percent slopes	Farmland of statewide importance	1.4	1.6%
Totals for Area of Interest			92.0	100.0%

Description

Farmland classification identifies map units as prime farmland, farmland of statewide importance, farmland of local importance, or unique farmland. It identifies the location and extent of the soils that are best suited to food, feed, fiber, forage, and oilseed crops. NRCS policy and procedures on prime and unique farmlands are published in the "Federal Register," Vol. 43, No. 21, January 31, 1978.